

2010-2011 CLASSES

Monday/Wednesday/Friday

9-11:30am
(Born on or before 12/31/06)

Monday/Wednesday/Friday- Extended Day

9-2pm
(Born on or before 12/31/06)

Tuesday/Thursday

9-11:30am
(Born between 8/1/06 and 12/31/07)

Five-Day Class

9-11:30am
Open only to children with prior preschool experience who will turn five-years-old on or before 1/31/11.

Five-Day Class – Extended Day

M/W/F 9-2pm, T/TH 9-11:30am
(Same requirements as Five Day Class.)

Kinder Plus

T-W-Th 9am – 11:30am
T-W-Th 9am – 12:15pm

Open to all PM Kindergarten students. A time for lunch will be provided. Those attending Milltown School will be walked there from NBRCP.

T-W-Th 11:15am – 3pm

T-W-Th 12:30pm – 3pm

Open to all AM Kindergarten students. Those attending Milltown School will be walked to NBRCP. At time for lunch will be provided.

Little Lambs

Thursdays 9-10am

Thursdays 10:30-11:30am

2 ½ to 3 ½ year old program where adult stays with child

MWF and 5-Day Class

Enrichment Programs

(ages 4 and 5 may sign-up at an additional fee)

SCIENCE EXPLORERS

(Fall and Spring Sessions)

TAEKWONDO

(Fall, Winter, and Spring Sessions)

HEALTHY CHEFS

(Winter Session)

LUNCH BUNCH

(Wednesdays 11:30am to 12:30pm Oct. – May)

T/Th Class

Enrichment Programs

(ages 3 and 4 may sign-up at an additional fee)

HEALTHY CHEFS

(Winter Session)

JAMTASTICS

(Winter Session)

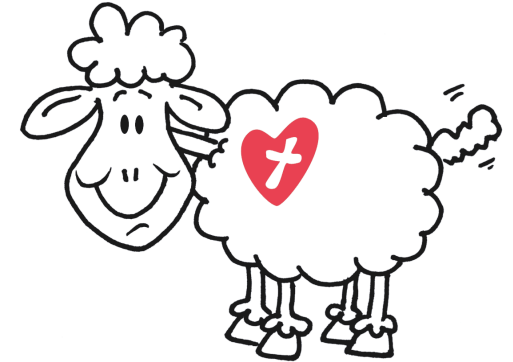
READING ROMP

(Spring Session)

LUNCH BUNCH

(Tuesdays 11:30am to 12:30pm Jan. – May)

North Branch Reformed Church PRESCHOOL



203 Route 28
Bridgewater, NJ 08807
908-725-2326
www.nbrc.com

FAITH-BASED PROGRAM

North Branch Reformed Church Preschool offers a Christian based program focusing on the emotional, social, physical, intellectual, and spiritual needs of every child.

ADMISSIONS & PROGRAMS

North Branch Reformed Church Preschool, established in 1957, offers morning and extended day programs. The Preschool opens at 9am each morning, closes at varied times, and serves children ages 2 ½ to 6 years old. Classes are offered between September and June. Registration begins in January. Registration and tuition information can be found online or by calling the Preschool. Our policy is to accept children without regard to race, religion, or ethnicity. Every child has a place at the Preschool!

CURRICULUM

North Branch Reformed Church Preschool encourages children to be actively involved in the learning process, to experience a variety of developmentally appropriate activities and materials, and to pursue their own interests as members of God's world.

Learning experiences are provided within a supportive environment to help each child increase individual awareness, recognize capabilities, build a healthy self-image, and develop the confidence necessary to move successfully into the next stages of education.

All groups are involved in an integrated religious education program, building on Christian values. The daily schedule is planned to balance activities including indoor-outdoor, quiet-active, small

group-large group, large muscle-small muscle, child initiated-teacher initiated. These activities are selected to foster a positive self-concept, develop social skills, encourage the development of language, physical skills and creative expression, and to enhance sound health, safety, and nutritional practices. Developmental milestones are assessed as the children progress through the program. Kindergarten readiness skills are an ongoing part of our curriculum.

SPECIAL PROGRAMS

- * Halloween Parade
- * Thanksgiving Feast
- * Christmas Pageant
- * Father's Saturday
- * Themed Evening Program
- * Mother's Visits
- * Week of the Young Child
- * Mother's Day Tea
- * Grandparent's Week
- * End-of-the-Year Show
- * Visits from Community Helpers
- * Class Field Trips

FAMILY INVOLVEMENT

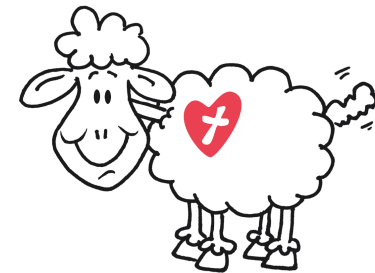
Families are an extremely important part of the North Branch Reformed Church Preschool. Families are encouraged to be actively involved in the life of our Preschool. Input from parents is sought throughout the year as we continually seek ways to improve our program. Numerous volunteer opportunities allow families to better the program offered at the Preschool. We welcome and encourage parents to join our Parent Teacher Organization (PTO) and to assist with classroom activities and school-wide events, which are planned throughout the year

FACILITIES

Our seven brightly colored classrooms, located in the education building of the church, offer a variety of developmentally appropriate learning areas, which include literacy, science, math, computers, art, dramatic play, and blocks. Children participate in a number of enrichment classes, which include Gym, Language Arts, and Music in Fellowship Hall, the Upper Rooms, and the Music Room. Our new oversized, fenced playground is well maintained and offers areas of shade and sun. The playground is equipped with numerous structures for climbing, balancing, crawling, and sand play.

EDUCATIONAL STAFF

Our faith-filled, professional teaching staff and administration bring years of dedication and experience in the field of early childhood education. The Preschool maintains low student to teacher ratios. Open communication is encouraged and evident through conferences, newsletters, emails, daily teacher letters, parent information boards, PTO meetings, and ongoing parent/teacher interaction.



CONTACT THE PRESCHOOL

908-725-2326

www.nbrc.com